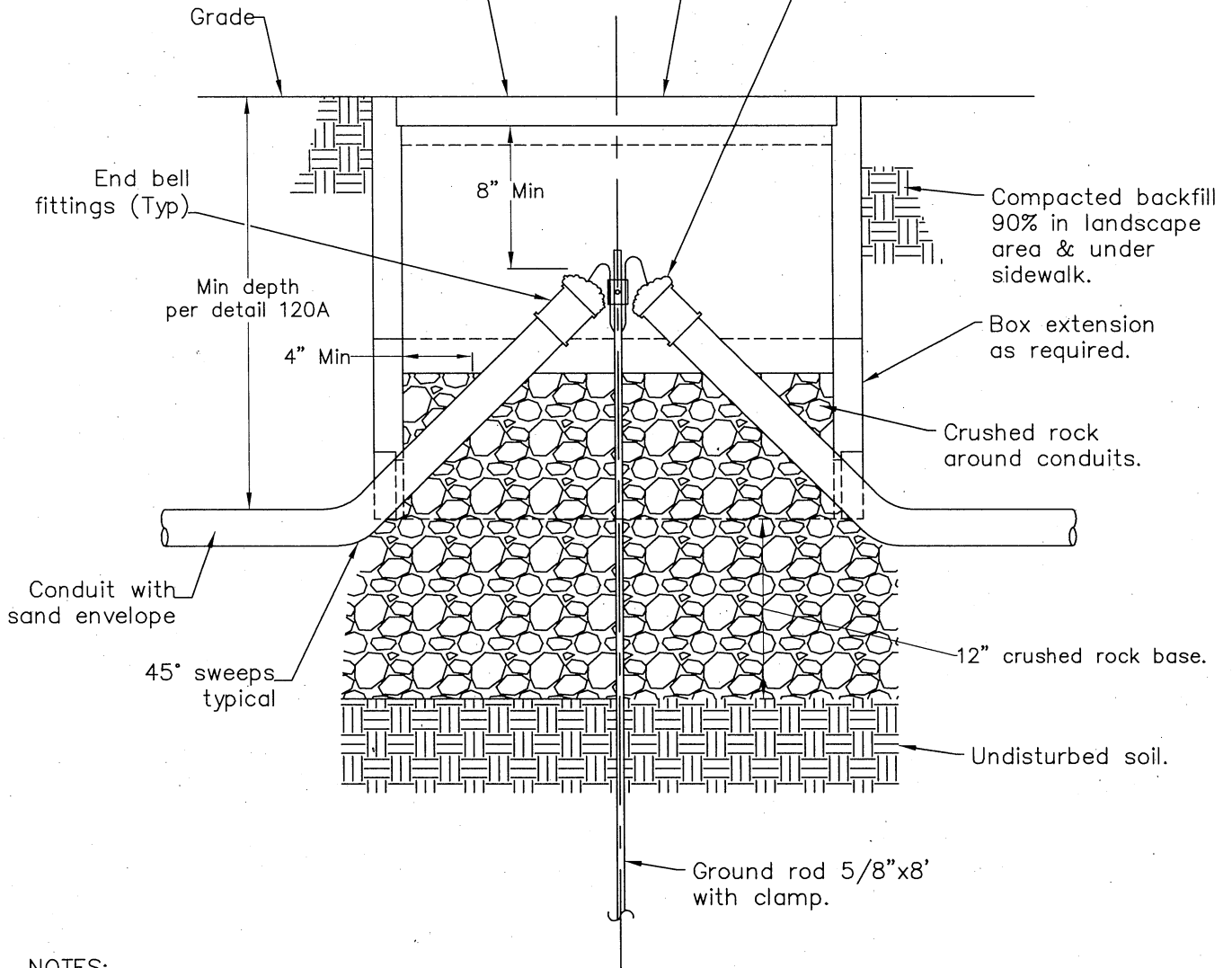


No. 5 Caltrans Std pull box, or as shown on plan. Lid shall be marked with the type of utility served such as "Electrical".

Provide VANDAL RESISTANT LOCKABLE PB INSERTS, as manufactured by McCain or approved equal, unless otherwise shown on plans.

Sealant on conduit stub-ups after conductor installation.



**NOTES:**

1. All work shall be done in accordance with the Standard Specifications for Public Works Construction, the "GREENBOOK", the most current edition and all supplements thereto, adopted by the Southern California Chapter of the American Public Works Association and the Special Provisions (Technical Specifications) thereto adopted by the City.


2. Conduits shall enter the box on the narrow ends, facing towards the center.

ACAD FILE: C3101D502Rev1.dwg

**CITY OF SAN LEANDRO \* STANDARD PLANS**

NO.	REVISIONS	DATE	BY
1	Added Note 2	10/18/18	NT

**PULL BOX DETAIL**

APPROVED   
 Nick Thom / City Engineer R.C.E. No.54659  
 Expires 9/30/19

DRAWN	AO/AMS	CHECKED	NT	DATE	May 2012	SCALE	NONE	SHEET	1 OF 1	DWG. NO.	502	CASE.	3101
-------	--------	---------	----	------	----------	-------	------	-------	--------	----------	-----	-------	------