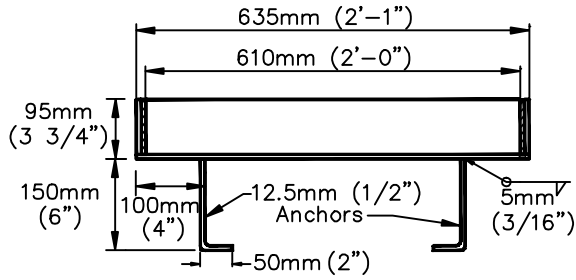
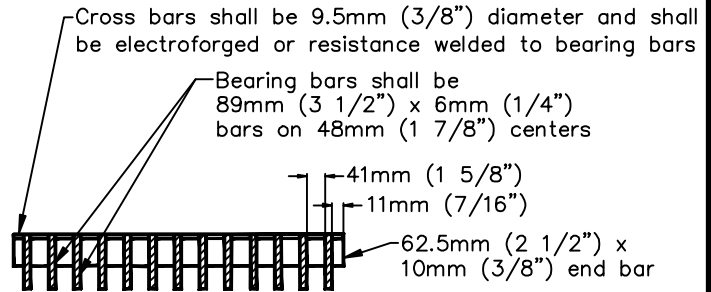


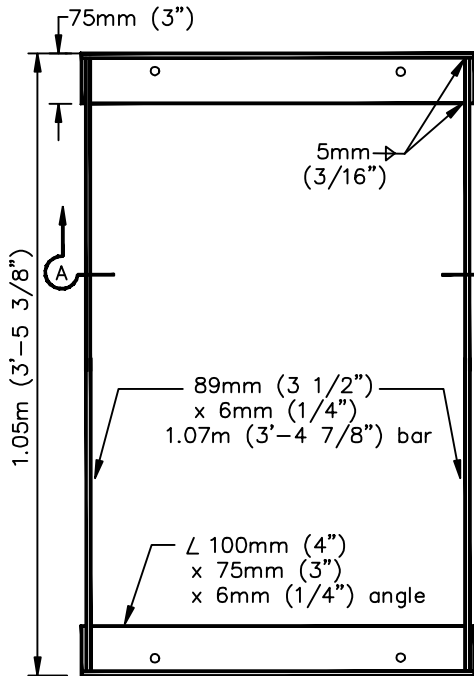
CURB OPENING ANGLE



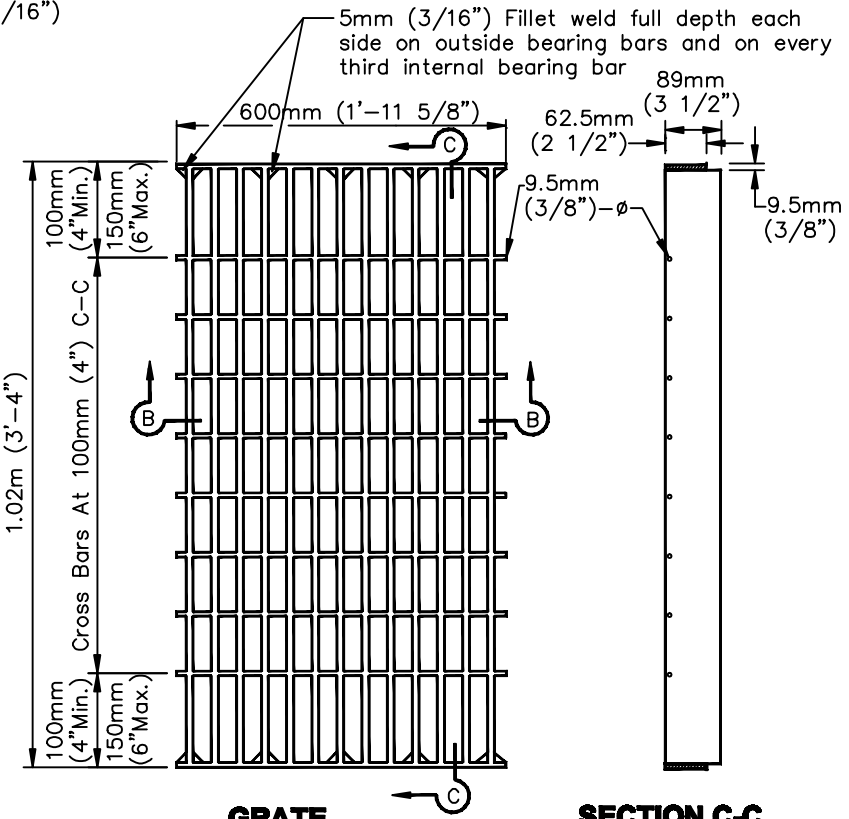
SECTION A-A



SECTION B-B



FRAME



GRATE

SECTION C-C

NOTES:

- All work shall be done in accordance with the Standard Specifications for Public Works Construction, the "GREENBOOK", the most current edition and all supplements thereto, adopted by the Southern California Chapter of the American Public Works Association and the Special Provisions (Technical Specifications) thereto adopted by the City.
- Frame, grate and anchor shall be Hot Dipped Galvanized after fabrication.
- Caltrans Type 600-10S grate (Reticuline Type) may be substituted with approval of the City Engineer.

ACAD FILE: C3101D202.DWG.

CITY OF SAN LEANDRO * STANDARD PLANS

NO. REVISIONS DATE			STORM WATER INLET FRAME AND GRATE (Caltrans Type 600-13 Equivalent)			APPROVED <i>[Signature]</i>							
						Kenneth Joseph, City Engineer R.C.E. No.34870 Expires 9/30/03							
DRAWN	GF/MLWH/VL	CHECKED	KJ/KRC	DATE	May 2002	SCALE	NONE	SHEET	1 OF 1	DWG. NO.	202	CASE.	3101