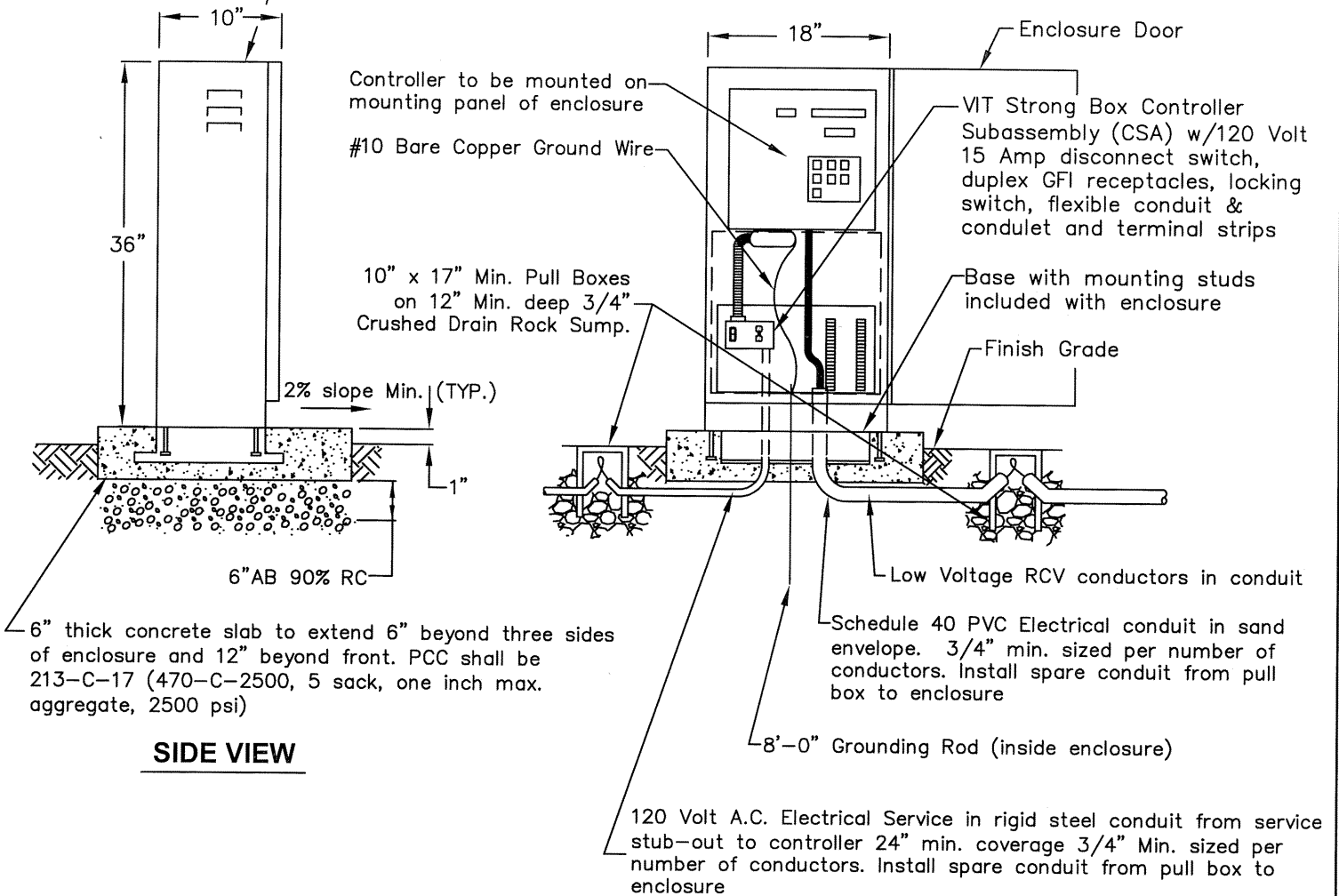


VIT Strong Box Stainless Steel Controller Enclosure. NEMA 3R rated, padlockable door, Model # SB-18SS with RGVRS Rain Switch Enclosure & Hunter Mini-Click C Rain Sensor located as directed by Engr.



NOTES:

1. All work shall be done in accordance with the Standard Specifications for Public Works Construction, the "GREENBOOK", the most current edition and all supplements thereto, adopted by the Southern California Chapter of the American Public Works Association and the Special Provisions (Technical Specifications) thereto adopted by the City.
2. Irrigation Controller. Stations per plan. Calsense ET2000E W/GR Stubby & Calsense flow sensor. Antenna installation per manufacturer specifications.
3. Pull box for electric service shall be Christy reinforced concrete N9 box 10"x 17" with bolt-down lid marked "ELECTRIC". Pull box for low voltage side shall be Christy Fiberlyte FL9 box 10"x 17" min. in landscaped areas and Christy reinforced concrete B9 box in paved area with bolt-down lid marked "IRRIGATION".
4. Provide reduced plastic laminated color coded "AS BUILT" irrigation plan in enclosure.
5. General Concrete Notes Dwg. 104 Case 3101 shall apply.
6. Refer to Irrigation Trench Dwg. 400 Case 3101 for minimum cover, backfill, resurfacing and other requirements.

ACAD FILE NO. C3101D402 Rev2.dwg

CITY OF SAN LEANDRO * STANDARD PLANS

NO.	REVISIONS	DATE	BY	IRRIGATION CONTROLLER ENCLOSURE			APPROVED						
1	Removed Rain switch from dwg. Note 2, removed rain switch info and added Calsense information. Removed metric dimension.	7/6/12	AO				 Kenneth Joseph, City Engineer R.C.E. No.34870 Expires 9/30/13						
		7/6/12	AMS										
DRAWN	GF/MLWH/JL	CHECKED	KJ/KRC	DATE	May 2002	SCALE	NONE	SHEET	1 OF 1	DWG. NO.	402	CASE.	3101