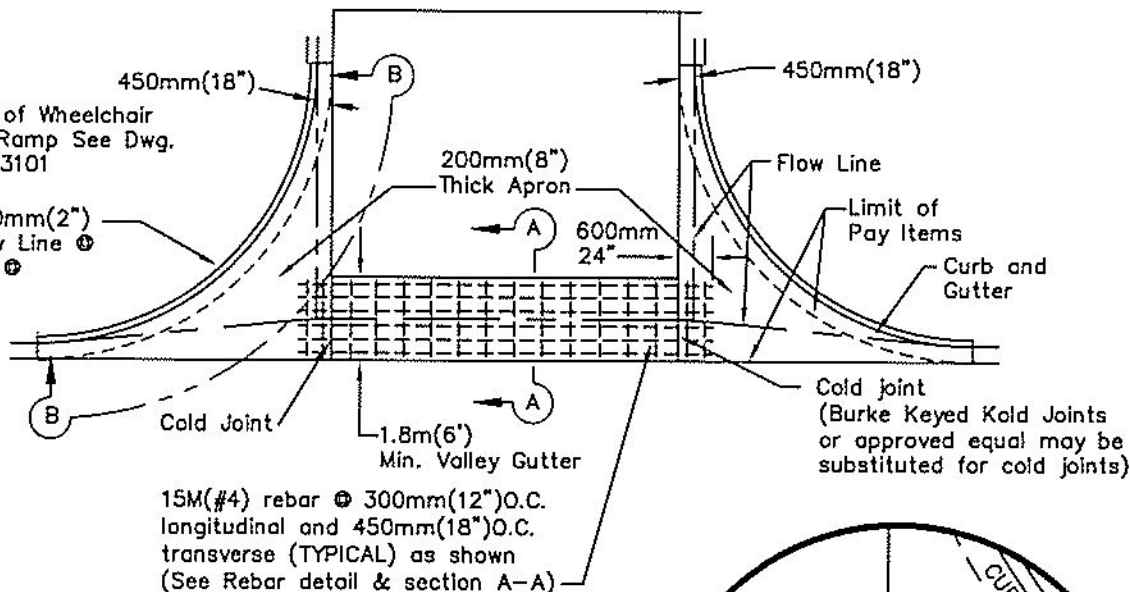


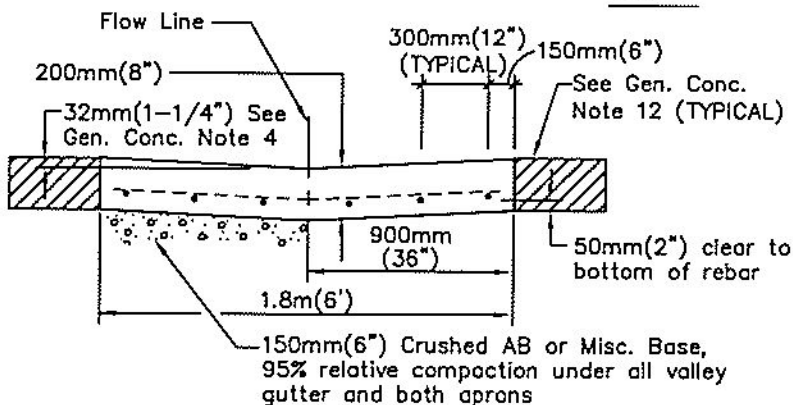
For detail of Wheelchair
Curb Cut Ramp See Dwg.
106 Case 3101

Elev. + 50mm(2")
above Flow Line ⊕
curb face ⊕
⊕ of curb
return

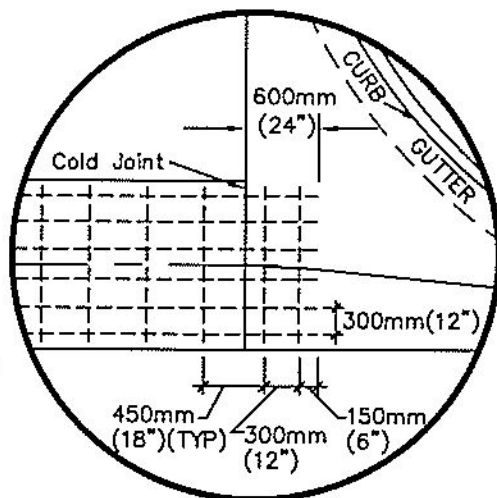


15M(#4) rebar ⊕ 300mm(12")O.C.
longitudinal and 450mm(18")O.C.
transverse (TYPICAL) as shown
(See Rebar detail & section A-A)

PLAN



SECTION A-A

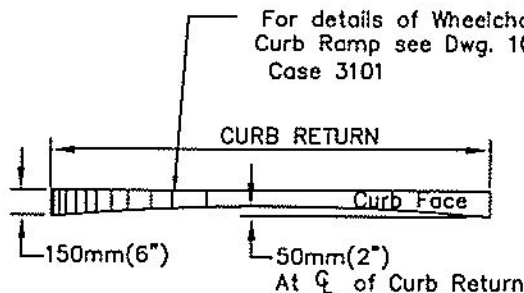


REBAR DETAIL

NOTES:

1. All work shall be done in accordance with the Standard Specifications for Public Works Construction, the "GREENBOOK", the most current edition and all supplements thereto, adopted by the Southern California Chapter of the American Public Works Association and the Special Provisions (Technical Specifications) thereto adopted by the City.
2. General Concrete Notes Dwg. 104 Case 3101 shall apply.
3. Concrete valley gutter apron shall be constructed monolithically with curb and gutter.
4. Variable where controlled by existing curb and gutter at valley ends.
5. Plan designates pay limits of valley gutter when applicable.
6. Water test flow line in presence of the City Engineer.

For details of Wheelchair
Curb Ramp see Dwg. 106
Case 3101




VIEW B-B

Elevation at curb return face

ACAD FILE NO. C3101D114.DWG.

CITY OF SAN LEANDRO * STANDARD PLANS

NO.	REVISIONS	DATE				APPROVED							
			VALLEY GUTTER			 Kenneth Joseph, City Engineer R.C.E. No. 34870 Expires 9/30/03							
DRAWN	GF/MLWH/VL	CHECKED	KJ/KRC	DATE	May 2002	SCALE	NONE	SHEET	1 OF 1	DWG. NO.	114	CASE.	3101